

FIRE & WATER

Community Resilience to Environmental Incidents

Martin Glynn

Rural Development Initiatives Ltd



- Home & World
- World
- UK
- Business
- Health
- Education
- Science & Environment
- Technology
- Entertainment
- Music
- Arts & Culture
- Books
- TV & Radio
- Home & Garden
- Food & Drink
- Travel
- Life & Style
- Sport
- Weather

Page not updated at 06:42 GMT, Thursday, 24 November 2009

Major floods hit parts of Cumbria



The BBC's 24-hour news channel is available on TV, radio and online. It provides the latest news and analysis from across the world.



News coverage by The Guardian newspaper, including reports on major events and local news.

Met Office issues severe weather warnings for snow

Earliest significant snowfall since 1993 on the way, according to Met Office weather forecasters

Get the latest UK weather forecasts

Published on 24 November 2009 10:41 AM



Heavy snow in the Cumbria region has warned. Photograph: David Goodwin

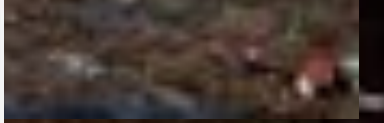
Anyone who began the day by snapping a winter coat in the sky doesn't need being, but from 10 and the threat of the first heavy snow of winter has arrived. The promised conditions of the forecasters came

in fire battle



Firefighters, security workers and police staff in a battle to contain a fire that has spread to a nearby village.

Firefighters were alerted to keep their eyes peeled for a fire in the nearby village of...



Photograph: David Goodwin

11 January 2011 Last updated at 11:20



England's uplands 'get more frequent heavy rainfall'

By Mark Kilmer

Science and environment reporter, BBC News

The frequency of heavy rainfall during the autumn and winter over the uplands of north England has "significantly" increased, a study has shown.

A team of UK researchers said the shift coincided with an increase in westerly weather systems over the area.

The findings showed why meteorologists at future weather warnings had to take into account how high ground could affect weather patterns, they added.

The findings will appear in the *International Journal of Climatology*.

"It seems to be a significant trend through the 20th Century," said co-author Tim Shuttle from Durham University.

"We started in the 1950s with quite dry winters, and relatively few heavy falls, while the 1980s were obviously exceptional in that regard."

The last decade of the century saw the uplands receive a record number of heavy falls of rain or water, yet an "almost complete absence of heavy summer rainfall".

Professor Shuttle expressed that an inch or less of rainfall over the course of a day, spread over a large catchment area, had the potential to result in a variable flood in low lying areas where run-off from the uplands had accumulated in local river systems.



Increased heavy rain in the uplands causes the risk of flooding in lowlying locations.

Related stories

Climate fluctuates every 12/10m

UK 'must plan' for warmer future

UK postbanks face stark choice

Top Stories



'Rory's call' lifts a damp mood

Ex-minister criticises Labour's fiscal

Japan rocked by new earthquake

17 die in Brazil school shooting

UK's export Portugal to reach record

Features & Analysis



Smaller ship

How do you build a 50,000-tonne power plant?



Blame game

Is Britain responsible for many of the world's problems?



Economics vs politics

Economic warnings to pull economic union despite political efforts



Three-point turn

How experts in Great Britain 'Chatterboxes'

Most Popular

Shared Read Video/Audio

Second warning for north Japan 1

Climate Commission 14 days ago 2

25 February 2011 Last updated at 16:11



Nottinghamshire fire budget slashed by more than £2.5m

Nottinghamshire's fire authority has frozen its council tax rate but delayed a decision on where it will make cuts.

The authority, which has voted to raise more than £2 bn from its budget, has formed a special working group to look at where to cut.

The biggest cost spokesman Phil Cudde said he hoped the cuts would affect less than the expected 100 firefighters and four stations.

The fire authority budget is raised from council tax and government grants.

Any proposals for cuts will be subject to public consultation.

'Clean slate'

"We are starting with a clean slate now and although there could be cut-shed Day number 1 - we are hoping it won't be. In the event we had feared," Mr Cudde said.

John Peck from Edwinstown Parish Council, which has a fire station under threat of closure, presented a 2,000-name petition to the meeting, opposing any move to close the station.

He said closing the Edwinstown fire station and moving it to Olverton would be a mistake.

The authority wants to keep the council tax rate for 2011-12 at the same level as this year with Band D households paying £55.68 a year.

Band A households will pay £45.46 and Band E will pay £34.25 for the year.

Mr Cudde added: "I have the impression the cuts may not be as bad as we had feared at first - which included the loss of 100 retained firefighters

Related Stories

Fire cuts may see station close

Councils Funding cuts hit 12.7%

Regional fire services 'should go'

Top Stories



'Baby walk' kills a dog in attack

Daughters' deaths inspire trust

Japan hit by new earthquake

12 die in Brazil without showing

UN report Portugal to seek more

Features & Analysis



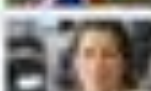
Wonder ship

How do you build a \$1 billion death car?



Blame game

Is Britain responsible for some of the world's problems?



Economics vs justice

Economic freedom to get income equal, despite political efforts



Three-point turn

How experts to think that's dangerous

Most Popular

Shared Read Video/Audio

Tsunami warning for north Japan

1

Sunderland seal over 'lost child'

2

Home » News » Budget cuts to hit rural services

Budget cuts to hit rural services

By Rosalyn Pugh

Print | Email



RURAL local authorities are particularly likely to reduce funding for services as budgets plummet.

Cuts to welfare and income budgets for all services led by 11% during the year to 2011/12, said the Rural Services Network.

During the two years to 2012/13, welfare budgets will fall by 17%.

The figures are based on an 18th survey of essential budgets over the next two years and the implications for service provision in rural areas.

They suggest rural local authorities will see staffing levels fall by an average of 2% during the year to 2011/12 and by 10% during the two years to 2012/13.

Full findings can be downloaded by clicking [here](#).

RSN chief executive Graham Riggs said the study showed that local authority cuts would hit rural residents harder than their urban counterparts.

Mr Riggs said: "These cuts are happening from a starting position where there are already fewer services available to communities."

Services most likely to be cut include cultural services, parks and leisure, economic development, environmental maintenance, and waste and recycling.

Services most likely to be affected include education, fire (RAF), advice services, and housing and homelessness services.

The study was carried out on behalf of the network by Brian Wilson, of research consultants Brian Wilson Associates.

"A number of these rural local authorities stressed that they were focusing any cuts on management costs and back office functions," Mr Riggs said.

News digest

To receive our weekly news digest and featured articles you must be logged in.

Type email here

See also:

[Dales confirms budget cut details in 11 weekly 2011-12](#)

[Dorset confirms welfare services cuts in 11 weekly 2011-12](#)

[Dorset confirms welfare services cuts in 11 weekly 2011-12](#)

[Cotswold confirms welfare services cuts in 11 weekly 2011-12](#)

[Dorset confirms welfare services cuts in 11 weekly 2011-12](#)

Other Services News

[Budget cuts to hit rural services in 11 weekly 2011-12](#)

[Cotswold confirms welfare services cuts in 11 weekly 2011-12](#)

[Dorset confirms welfare services cuts in 11 weekly 2011-12](#)

[Community budgets may be cut in 11 weekly 2011-12](#)

[Cotswold confirms welfare services cuts in 11 weekly 2011-12](#)

Other Latest News

[Budget cuts to hit rural services in 11 weekly 2011-12](#)

[Cotswold confirms welfare services cuts in 11 weekly 2011-12](#)

[Dorset confirms welfare services cuts in 11 weekly 2011-12](#)

[Rural policy with welfare work in 11 weekly 2011-12](#)

[Rural Council for the Shropshire in 11 weekly 2011-12](#)

So what's to be done

- ❖ identify risks
- ❖ seek solutions
- ❖ enable partnerships
- ❖ work together



Wildfire Groups

- ❖ growing risk
- ❖ creates resilience issues
- ❖ environmental &
economic damage



Wildfire Groups

- ❖ consist of public &
private sector
- ❖ train, plan & network
- ❖ break down barriers



Flooding Partnerships

❖ increased frequency

❖ unpredictable

❖ rural communities

difficult to reach



Flooding Partnerships

- ❖ community led
- ❖ agency supported
- ❖ self - help



Keys to Success

- ✓ genuine partnerships
- ✓ independently
facilitated
- ✓ adequately resourced



FIRE & WATER

Community Resilience to Environmental Incidents

Martin Glynn

Rural Development Initiatives Ltd

