

Cleveland
Ohio

The sign is a dark brown rectangular plaque with a gold border. At the top, there is a gold outline of the state of Ohio. Inside this outline, the word "OHIO" is written in gold, and below it, "HISTORICAL MARKER" is written in white. The outline is flanked by two green leafy branches with brown acorns. The main text of the sign is in white and gold. The background of the photo is a twilight sky with a building's illuminated facade visible on the left and right.

OHIO

HISTORICAL
MARKER

BIRTHPLACE OF ROCK 'N' ROLL

When radio station WJW disc jockey Alan Freed (1921-1965) used the term "rock and roll" to describe the uptempo black rhythm and blues records he played beginning in 1951, he named a new genre of popular music that appealed to audiences on both sides of 1950s American racial boundaries - and dominated American culture for the rest of the 20th century. The popularity of Freed's nightly "Moon Dog House Rock and Roll Party" radio show encouraged him to organize the Moondog Coronation Ball - the first rock concert. Held at the Cleveland Arena on March 21, 1952, the oversold show was beset by a riot during the first set. Freed, a charter inductee into the Rock and Roll Hall of Fame, moved to WINS in New York City in 1954 and continued to promote rock music through radio, television, movies, and live performances.



THE OHIO BICENTENNIAL COMMISSION
THE ROCK AND ROLL HALL OF FAME
THE OHIO HISTORICAL SOCIETY
2003

46-18

ALL HALL OF FAME AND MUSEUM

1000 KEY PLAZA



The Humber

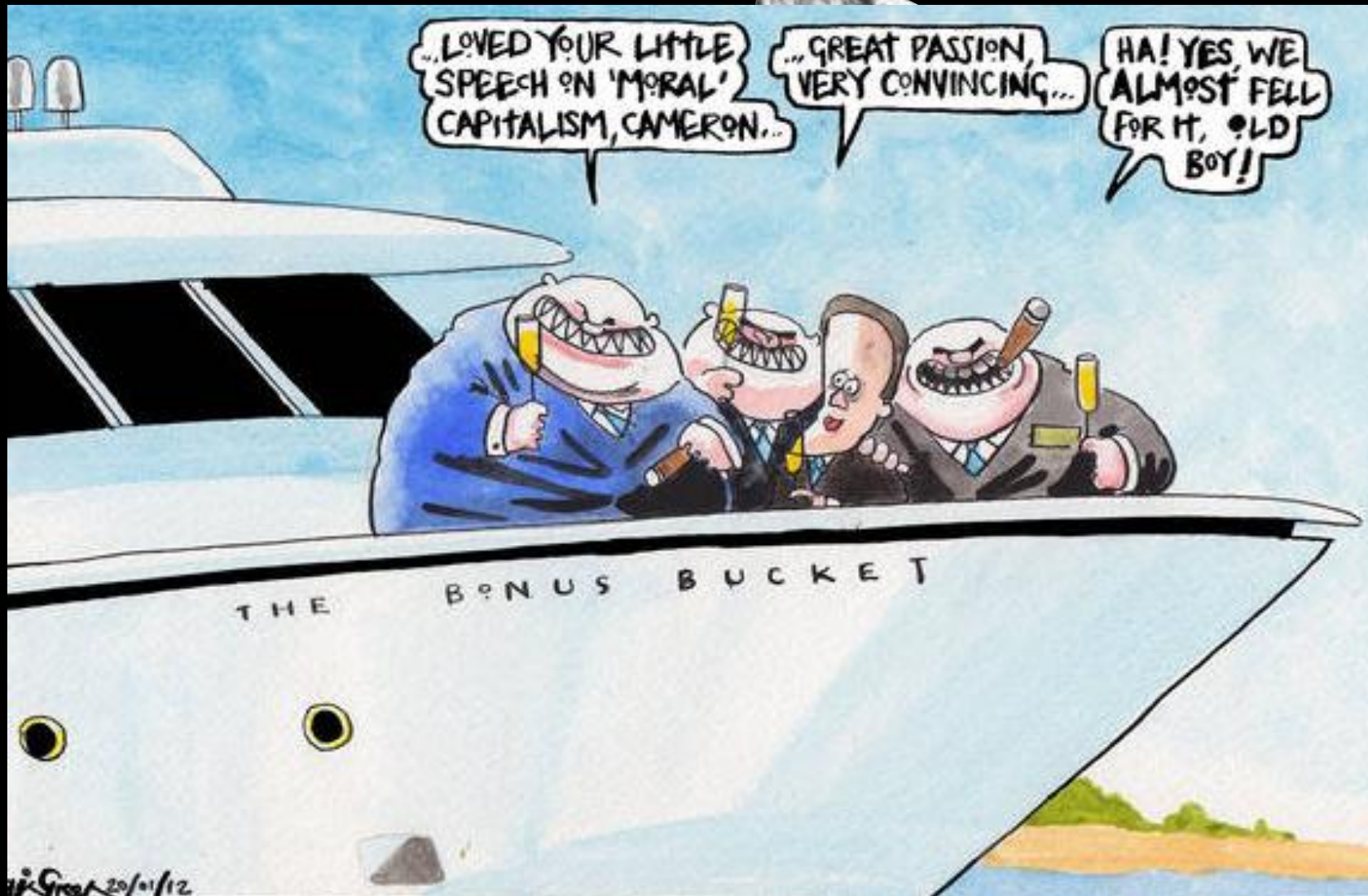
The Wash

Wind

Sport



TTFN.....



Social Investment?



*“Price is what you pay,
value is what you get.”*

Warren Buffett



Grants & Consultancy

Consultancy Network

big *assist*

Building the future for infrastructure together

Buildings at Risk

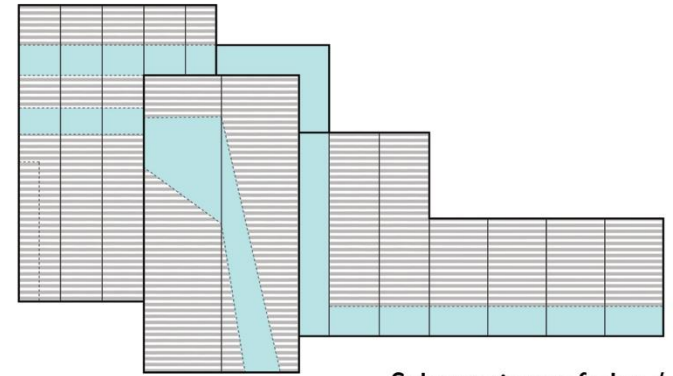


Buildings at Risk

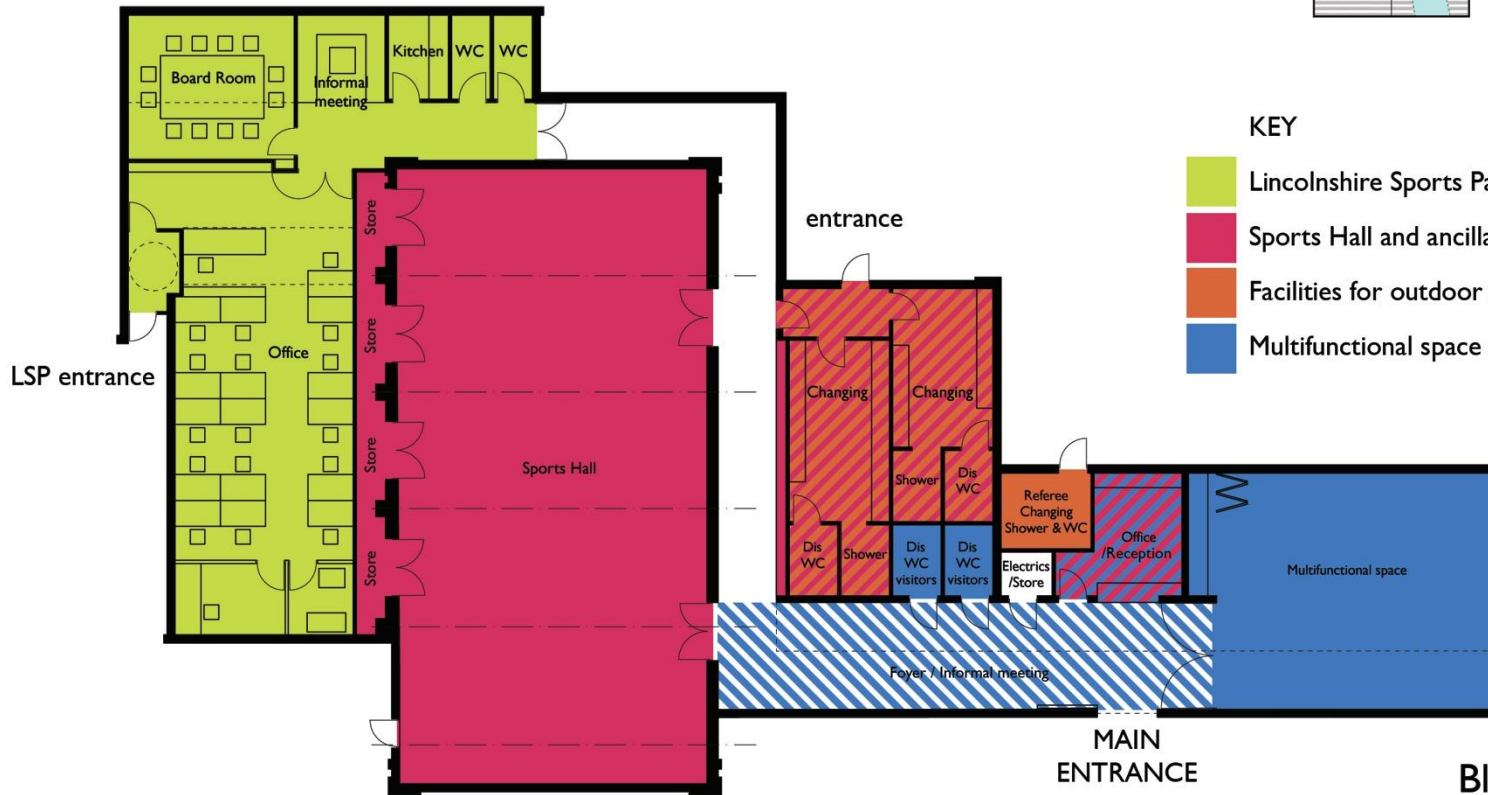


Asset Transfer





Schematic roof plan / design concept NTS



KEY

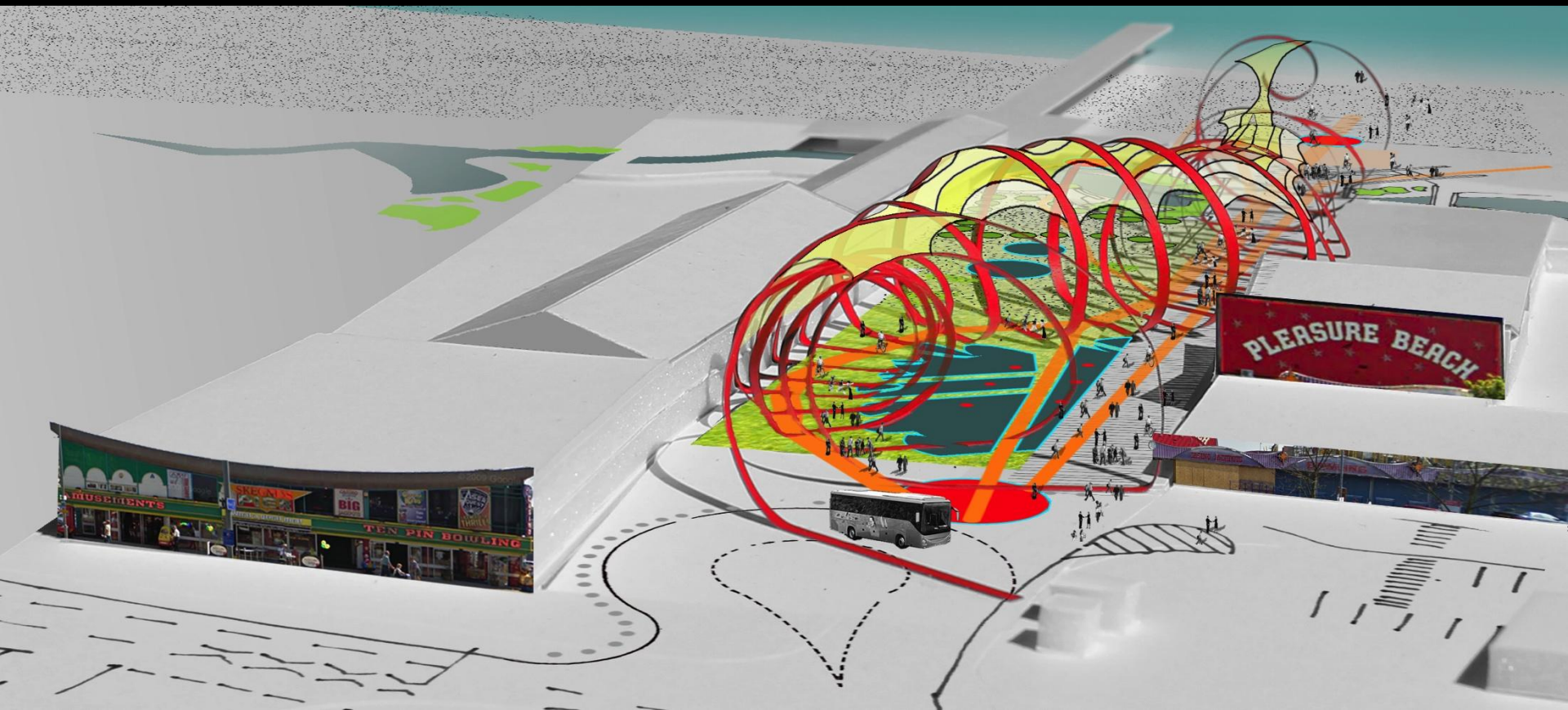
- Lincolnshire Sports Partnership block
- Sports Hall and ancillary facilities
- Facilities for outdoor activities
- Multifunctional space and ancillary facilities

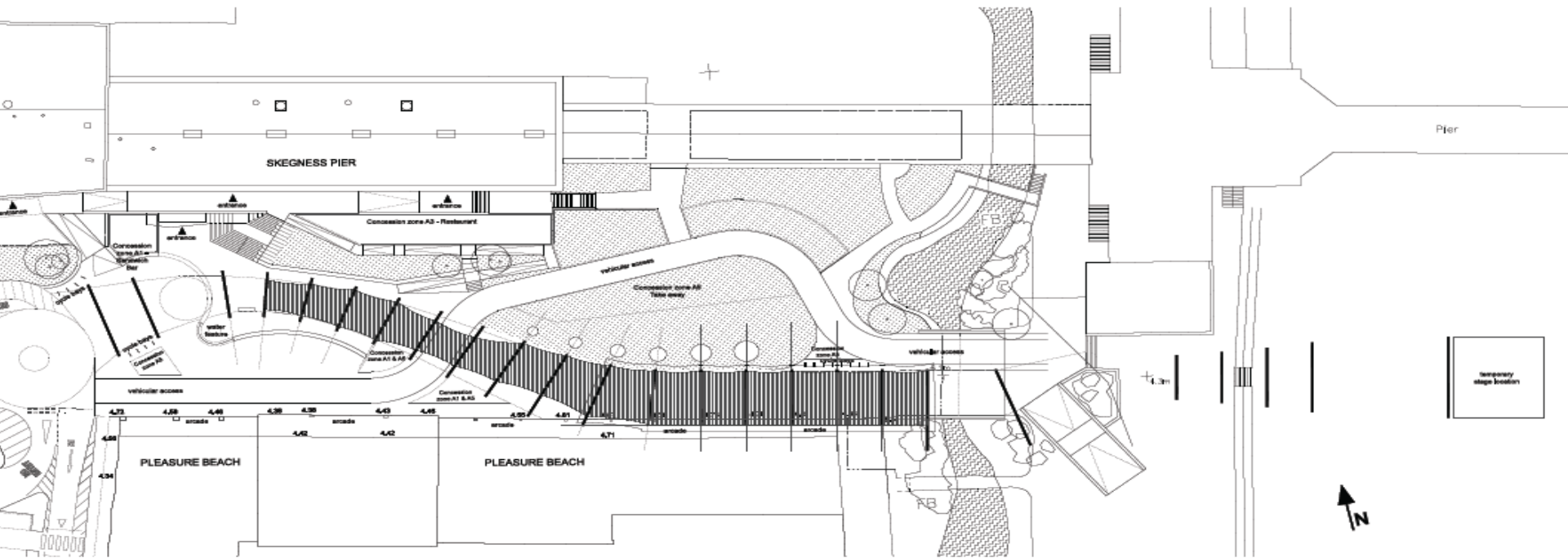
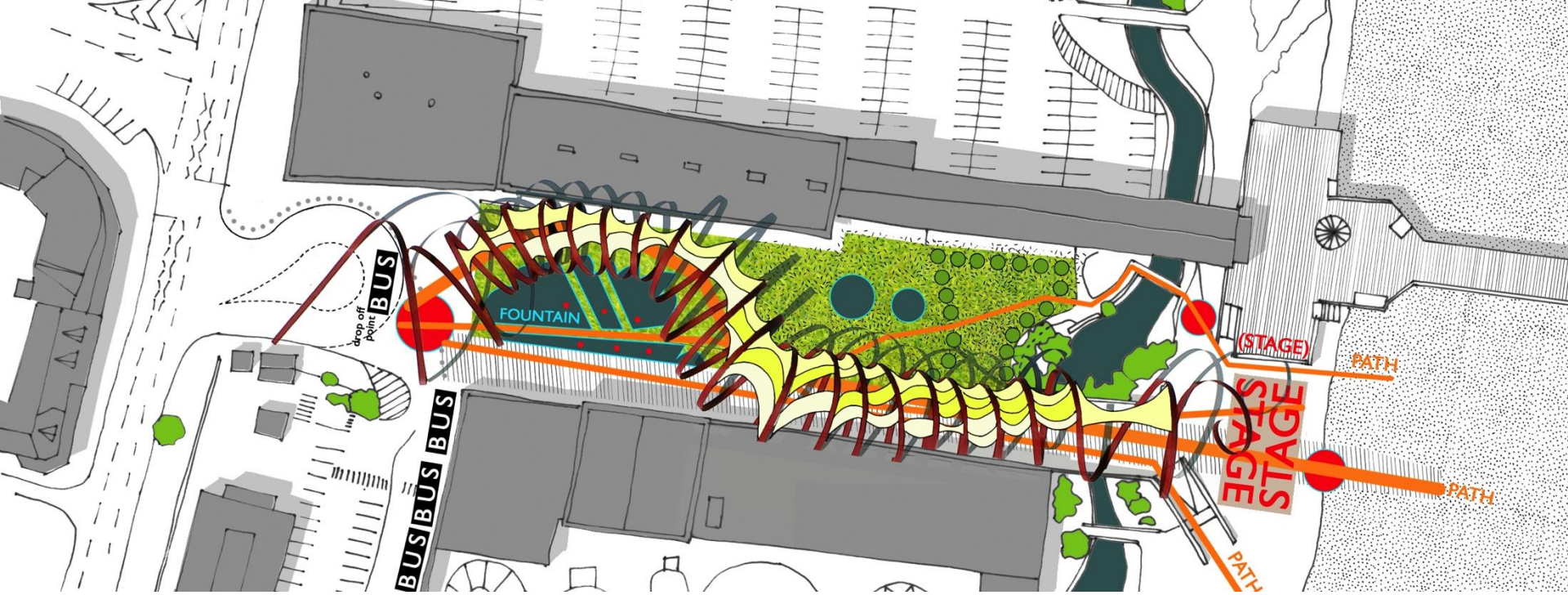
Block plan 1:200 @A4



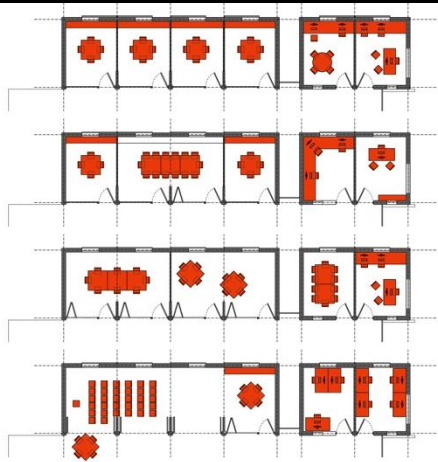
Public Private Partnership



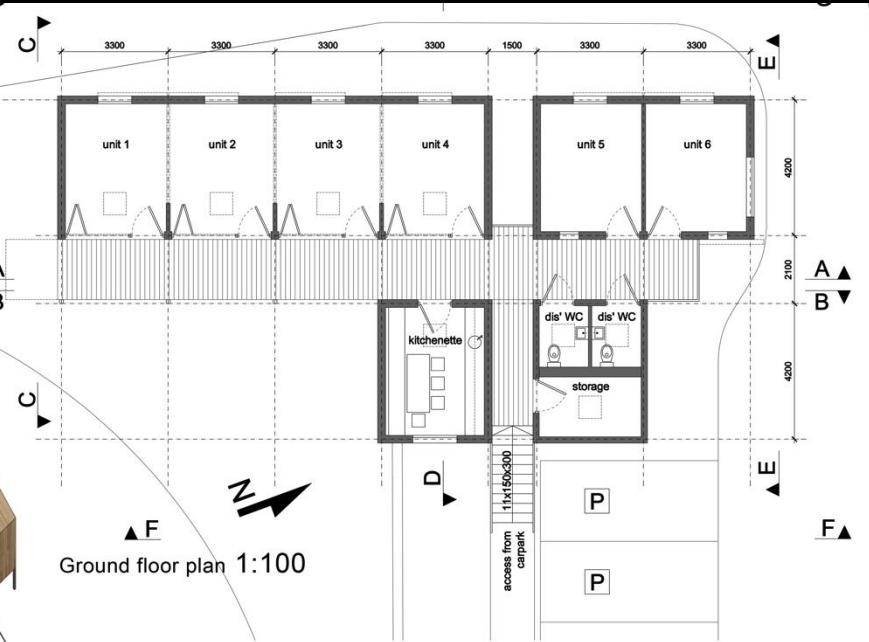
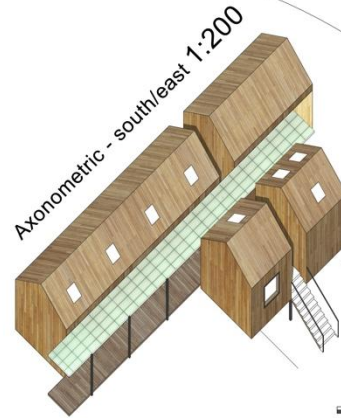




Agriculture



Possible furniture layouts / open plan 1:200



Ground floor plan 1:100



Section DD 1:100



East elevation FF 1:100



View from the road

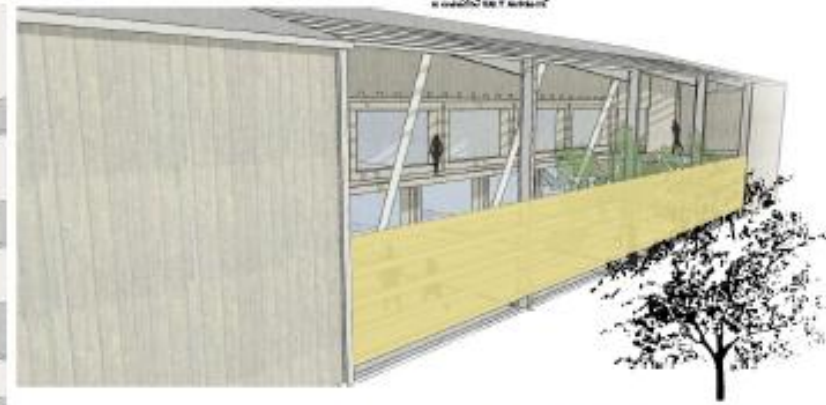


Section AA 1:100

Eco Refurb

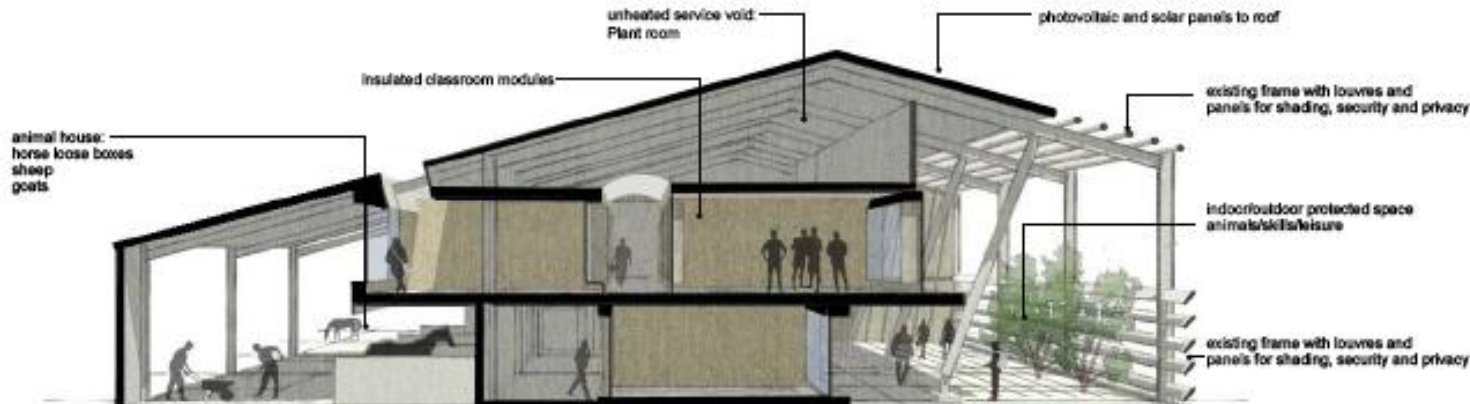


View of Courtyard Space
Semi outdoor space for gardening/
small animals/leisure



View of Building on the South Side
all classrooms have daylight

precedent - farm aesthetic of open
timber boarding with insulated spaces
to create new college areas



Revised Details	Drawn	Date
Architect	Client	Date



Client name
LANDMARKS

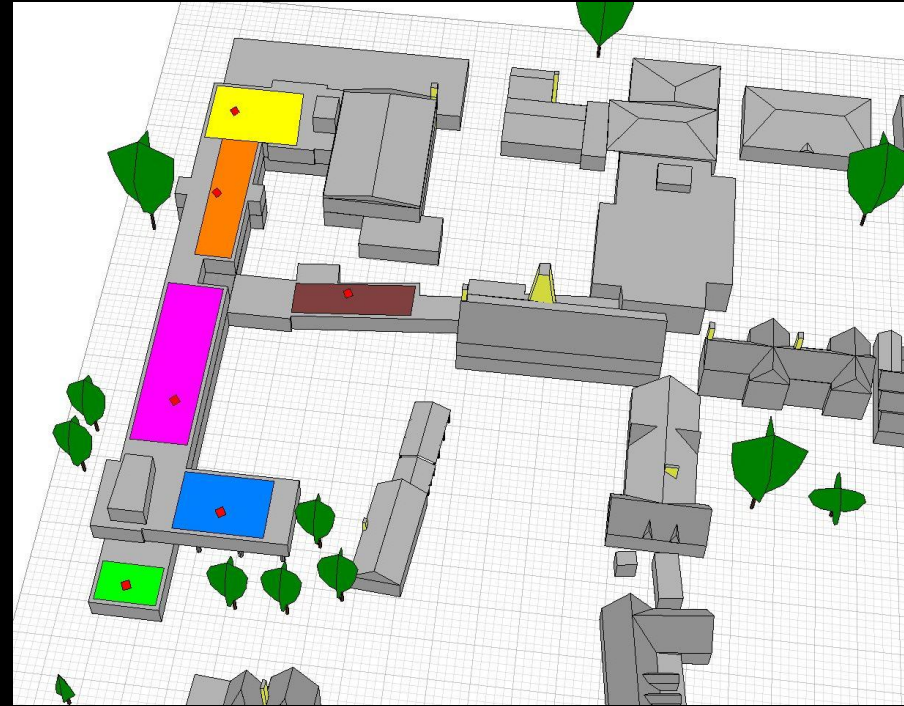
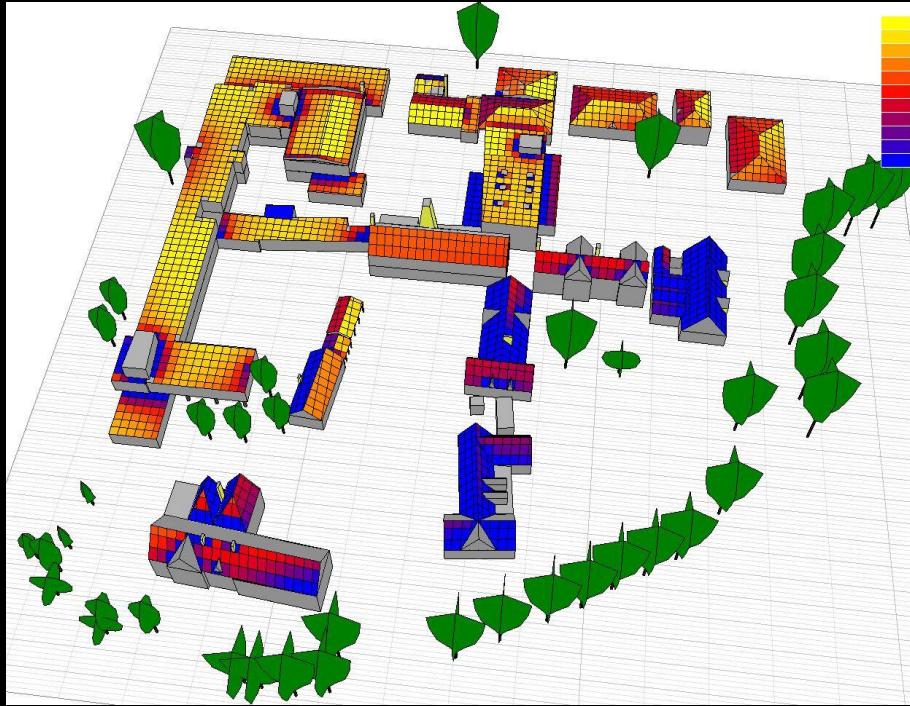
Project
**New Premises
Barn Conversion**

Drawings
**Sketch Scheme 1
Sketches**

Scale
**SCALE @ A3
NTS**

Drawn: BH
Checked: []
Date: Oct 2012

Energy Efficiency



Fuel Poverty

