

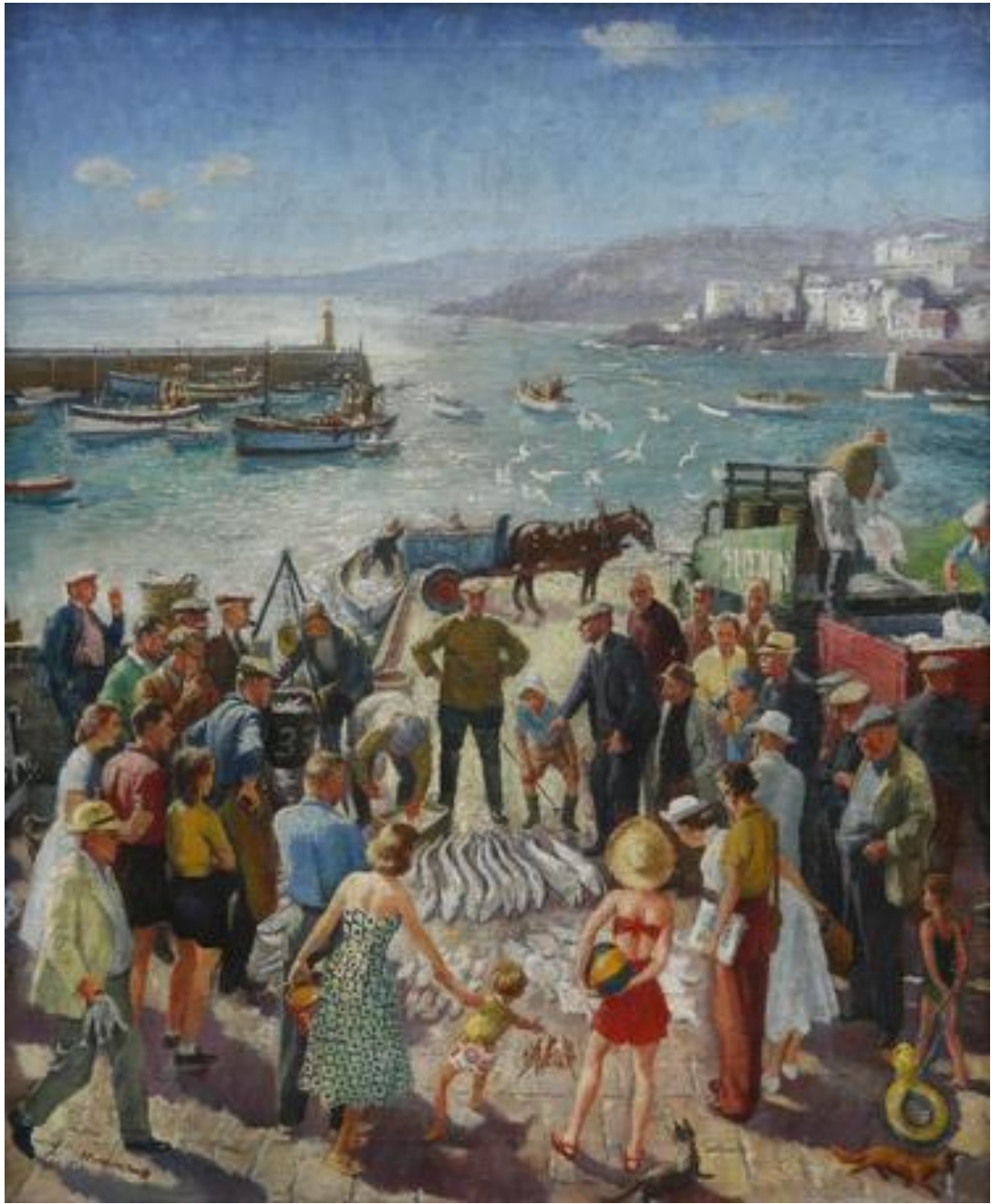
# Working with fishing communities



# Cornwall

53 species fish landed £22million





# Fisheries Local Action Group



Competative process

6 groups funded

Hastings Town

North Devon

North Norfolk

Cumbria

East Yorkshire

All awarded around £1.3 million

Further £4 million available

# Strategy and Delivery Plan

- 7 themes with lots of hooks
  - » Developing sustainable supply chains and market development
  - Providing infrastructure and communal facilities for fishing communities and cooperatives
  - Capacity building, cooperative development and networking
  - Training, retention and recruitment including diversification
  - Coastal communities, tourism and economic development
  - Advocacy and engagement for fishermen
  - Regional sustainable management engagement

# Projects



▲ The port of mevagissey at low tide.

Mevagissey, CCTV and lights £20,000

# Fish bins



75% grant for fishermen funds insulated bins, life jacket and personal eperb

First round 130 fishermen cost £100,000

# Attracting young people

- New resource centre
- Prince's Trust get into fishing
- Supported apprenticeship
- Access to share boat
- Supported training





# Port Development - Coverack

## £100,000



### ACCOMMODATION

B and B  
Self Catering  
Camping and YHA  
Hotel  
Nursing Home  
Horse Retirement  
Houses for Sale  
Houses for Rent

### EDUCATION

Adult Classes  
Coverack School  
Discovery Sheets  
Local Marine Life  
History & Geology  
Local Wild Flowers  
Art Courses  
Recycling

### CLUBS

Art Club  
Gig Club  
Lunch Club  
Manacle Voices  
Coverack Singers  
Square Dance

### Latest Coverack News


### Art Courses 2013

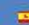
### Lambeage Hall



Christmas Lights Team at Work 21st November 2012

 [Bienvenue](#)

 [Wilkommen](#)

 [Bienvenidos](#)

[Links to other local websites](#)

This website is run by a small group living in the village, and working for the community.  
Please contact us by [email](#) with comments, or to advertise with us.

We do not use Cookies on this website

### ACTIVITIES

Diamond Jubilee events  
Winter 2012-2013  
Local Tourist Attractions  
Online Centre  
Surfing  
Walking  
Watersports  
Sailing at Helford  
Harbour  
Find a Pisky

### LOCAL

#### Art Gallery

Buses  
Businesses  
Church  
Coverack Memorabilia  
Fundraising  
Information Boards  
Lambeage Hall  
Photos  
Poems  
Restaurants  
St Peter's Hall  
Services  
Shops

# Looe Harbour meeting space £250,000 £100,000 FLAG



# Private Business Stainless Steel



40% grants for stainless steel  
Promoting Cornish fish  
Adding value to catch  
Micro enterprise fishermen  
direct selling

# How will the Post 2013 European funding be delivered?

---

In Cornwall and the Isles of Scilly we are best placed to understand our own unique opportunities and challenges. Therefore, it is important that we have the flexibility to set our own objectives and align future European investment with our own policies and programmes that are tailored to local need.

Cornwall and the Isles of Scilly are in the unique position of already having a Local Enterprise Partnership (LEP) in place that shares the same boundary as the identified area for the allocation of European funds. By 2014 our LEP will be well established, providing a strong strategic body to draw on the experience of private, public and voluntary and community sector partners in order to design, steer and monitor future European programmes of investment.

The future programme for European investment must be effectively administered and compliant with EU regulations. Cornwall Council has played a significant part in shaping the delivery of all previous European Programmes as well as increasingly supporting the mainstream delivery of the current

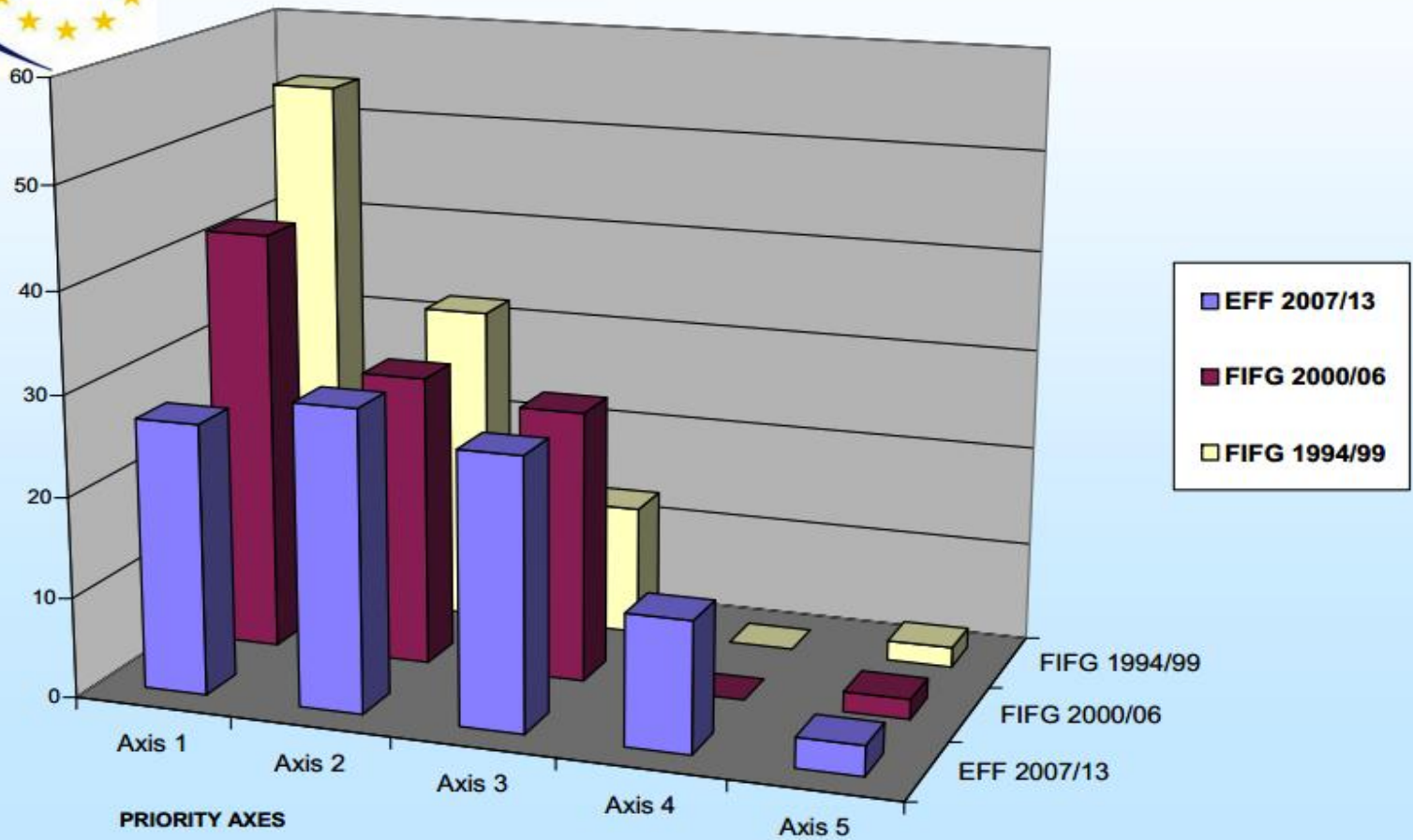
programme. Therefore, we consider that the Council is ideally situated to play a leading role in shaping and delivering future European programmes. Furthermore, as the second largest authority in the UK with a turnover of more than £1.2bn, Cornwall Council has sufficiently robust procurement and risk management processes to assume a more significant role in programme delivery.

**CORNWALL &  
ISLES OF SCILLY  
LOCAL ENTERPRISE PARTNERSHIP**

---



## Distribution on axes in the structural programmes



# European Maritime and Fisheries Fund (EMFF)

- Smarter, green Fishing
- Smarter green aquaculture
- Sustainable
- Integrated
- BUDGET 6.6 Billion

