

Geo Dales Project

Geodiversity in the Yorkshire Dales and Nidderdale

January 2012 – July 2013



- Geodiversity is the natural range of geological (rocks, minerals, fossils), geomorphological (landforms, landscape-shaping processes) and soil features ... and built (stone) heritage and historical geological literature
- Geodiversity is conserved principally for scientific, educational and cultural reasons. UK sites are of international significance
- Source: Joint Nature Conservation Committee

Geodiversity in the Dales

- Features of national geodiversity importance are well-represented in the area
- Dales karst scenery among the best in UK
- Sandstones have weathered to create famous tors like those at Brimham Rocks SSSI in Nidderdale
- Multitude of highly important locations in quarries and natural outcrops



Project aims

- New opportunities for discovering, learning, enjoying and valuing the scientific and cultural richness of sites
- Research and interpretation at trial sites
- Support conservation of sites through management by professionals and volunteers
- Support long term interest and involvement in landscape and geodiversity

Trial site 1 - Ribblesdale



Victoria Cave, Langcliffe

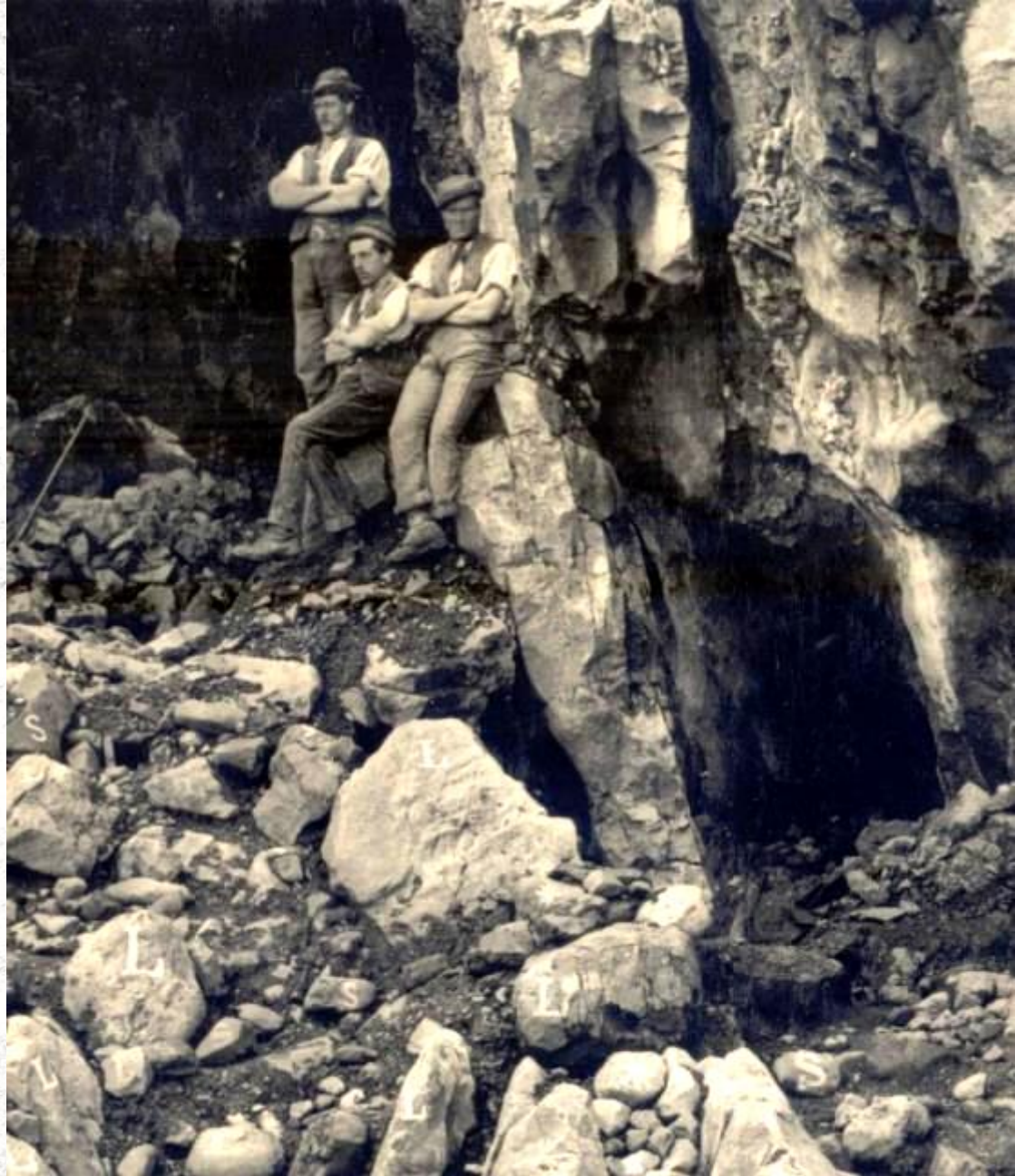


Victoria Cave – Research history and exhibition

- Lower Winskill Visitor Centre
- Victorian and 20th Century excavations
- The Folly Museum, Settle – 4500 visitors in 2012-13
- Exhibitions and displays of Romano British artefacts, Palaeolithic, glacial and pre-glacial mega fauna

Cave deposits record 600 000 years of climate change

- Romano British ritual remains
- First settlers in the Dales
- Brown bear den in last glacial phase
C. 17 – 100, 000 BP
- Hyena den C. 125, 000 BP
– remains of hippo, rhino and extinct elephant species



Settle and Stainforth Geo Trails

- Short walks with leaflet guide of routes, key sites, maps, images
- Interpretation without information panels?
 1. Post and swing signs
 2. Geo Trail – The Settle App



Introduction



GeoTrail

The Settle App



Icon



Default view



Home view



Vibrant Settle Community Partnership



The Walks

Geo Trail

The Settle App



Map options view



Map view



POI view



POI slide out details view

Local Directory



GeoTrail The Settle App



Local Directory view



Local Directory Search view



Business detail view



Restaurant map view

Local archaeology survey and conservation



North Craven
Heritage
Research
Group

Site survey at
the Plantlife
Winskill Stones
Nature Reserve



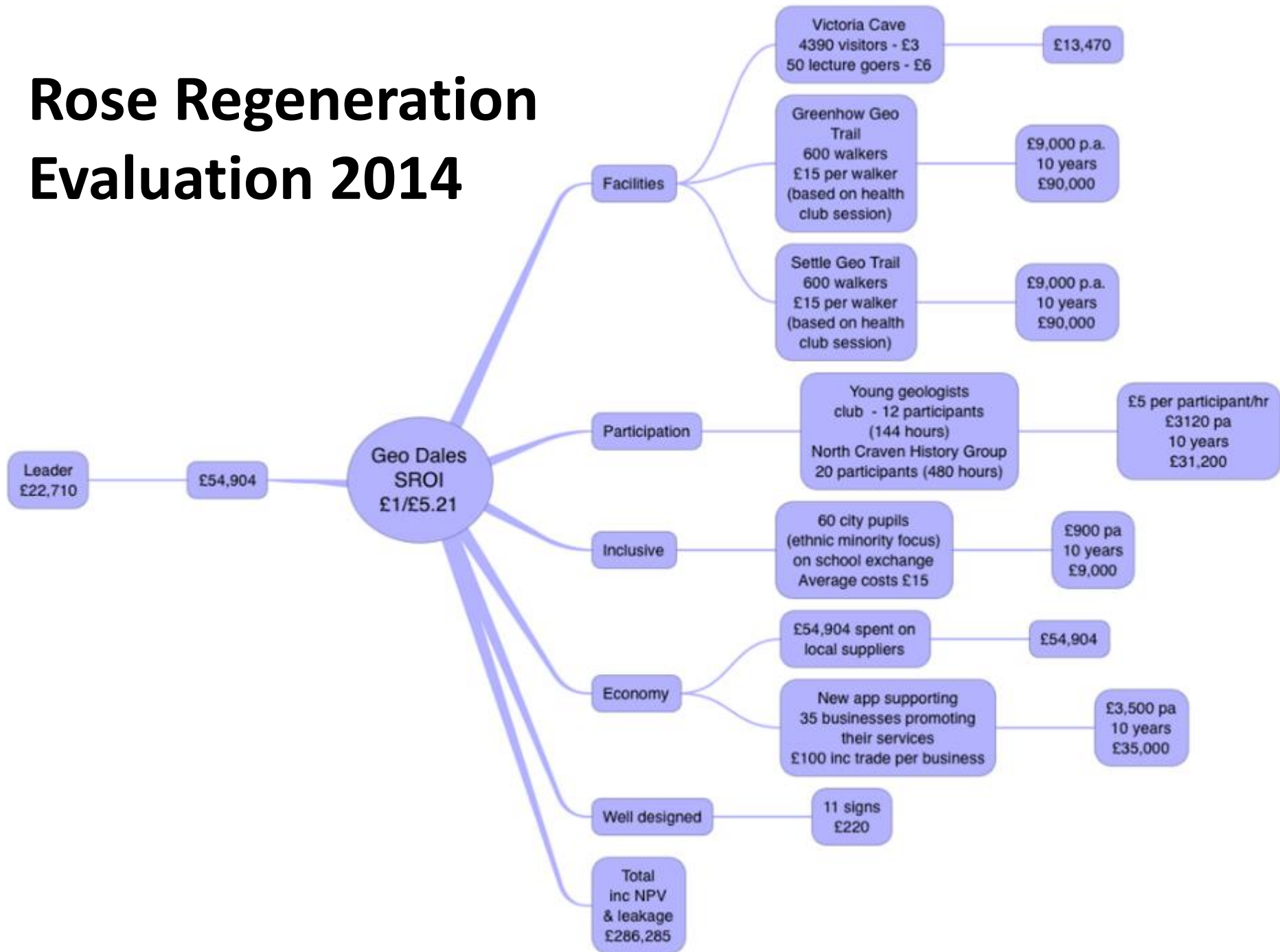


Trial Site 2 - Greenhow

- Rich lead mining landscape
- Existing, dedicated Greenhow Local History Group
- Strong support of Hanson Aggregates at Greenhow Quarry
- Create Greenhow Trail
- Support Young Geologist Club



Rose Regeneration Evaluation 2014



2014 and beyond

- Heritage Lottery Fund, Landscape Partnership scheme in Upper Nidderdale led by AONB
- Research for activity and new interpretation to fit the strategic branding of this major scheme
- Ribblesdale and 3 Peaks – YDMT developing a LPS. The Ingleborough Dales - Stories in Stone

A programme of landscape and community projects, developing a strong partnership in the Ingleborough Dales area. Aims to:

- Celebrate the connection between people and place
- Conserve important features of the landscape
- Enable wider learning and involvement
- Develop distinctive heritage skills

Funders and partners

Supported in partnership by:



The European Agricultural
Fund for Regional Development
Europe Investing in Rural Areas



YORKSHIRE DALES
National Park Authority
Sustainable Development Fund



Nidderdale
Area of Outstanding Natural Beauty



BCRA

