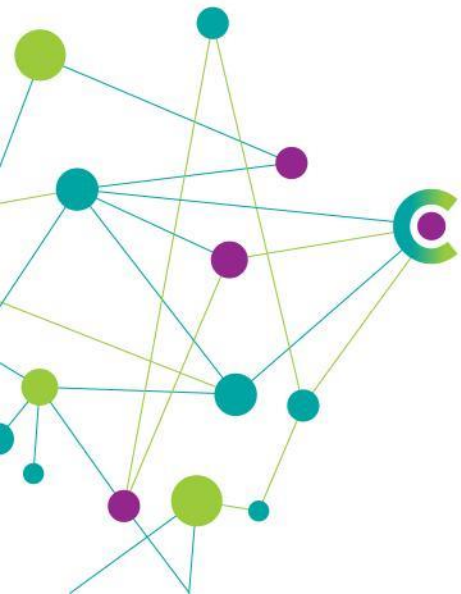




Project Overview

Andrew Arditti

Connecting Cheshire – Digital Engagement Manager



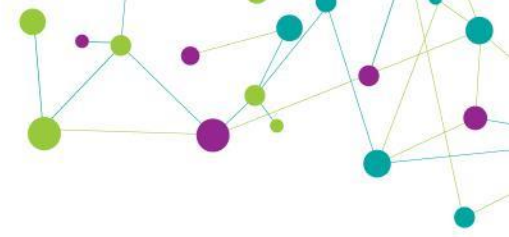


We're bringing
96% coverage
of fibre broadband
to Cheshire by
2015

Who are we?

- Established in 2011
- 4 unitary councils:
Cheshire East,
Cheshire West & Chester,
Halton & Warrington
- Appointed BT as build partner April 2013
- Funded by local councils,
government, ERDF and BT.





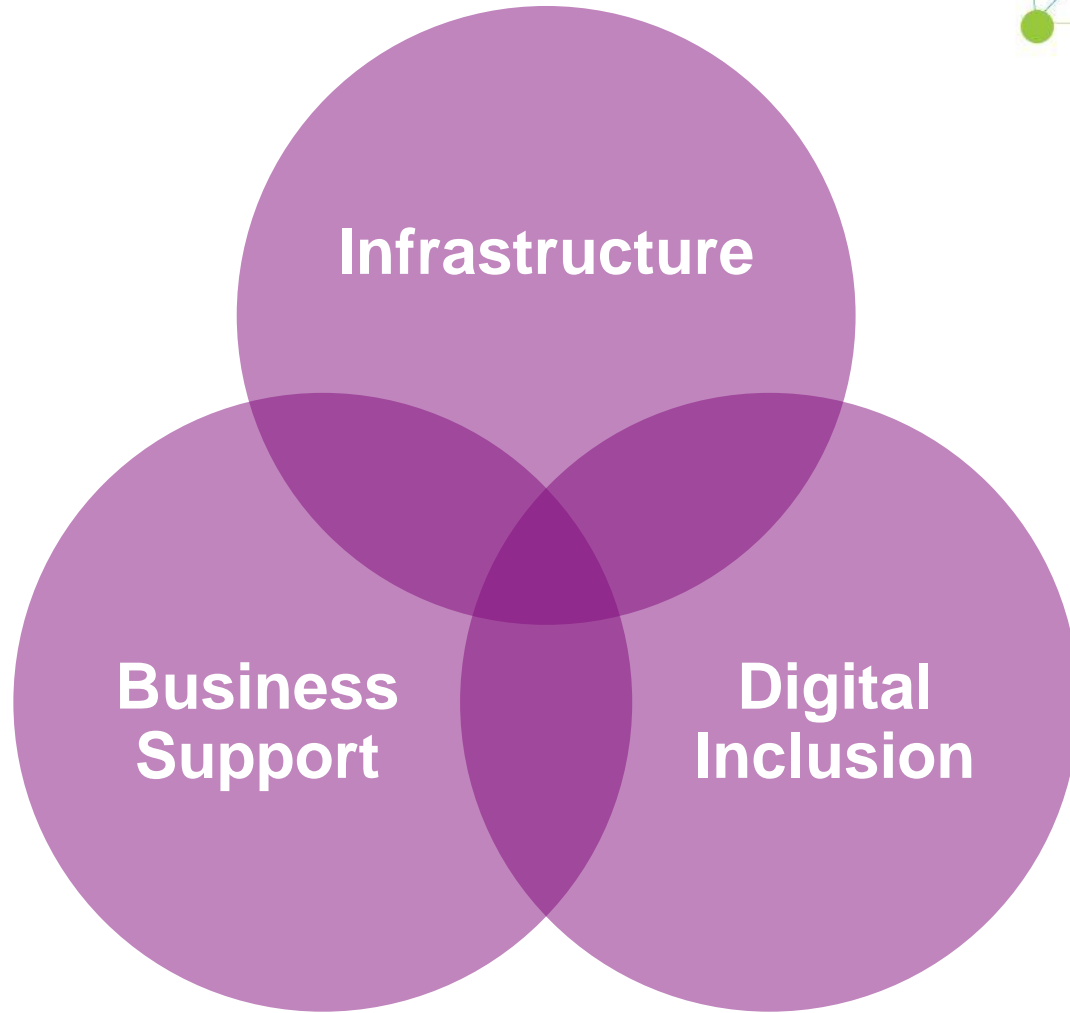
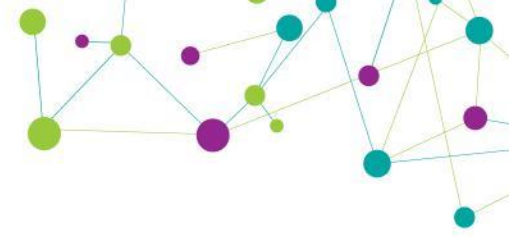
Programme Vision & Objectives

Infrastructure:

- To reach an additional 80,000 premises with fibre broadband, or provide a minimum of 2Mbps, across Cheshire, Halton and Warrington

Knowledge, Skills & Digital Inclusion:

- To support businesses and communities to exploit the benefits of fibre broadband



A £31m project across 3 work streams

Broadband Infrastructure



Urban areas:

80% premises coverage via commercial roll-out

Rural areas:

20% premises unviable for commercial roll-out
= Digital Divide for approx. 93,000 premises



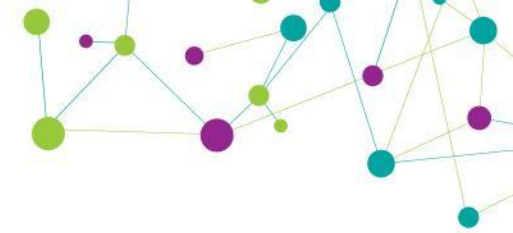
Gap-fund network to 80,000 premises



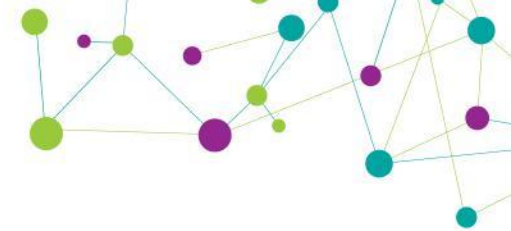
**Further than from Land's End
to John O'Groats**

**We're
installing over
450 roadside
cabinets and
875 miles
of fibre-optic
cable**

The Engineering Challenges



Digital Inclusion & Business Support



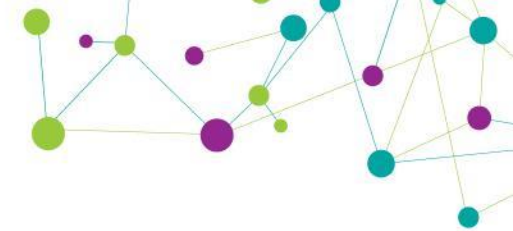
- 100,000 people off-line in Cheshire – mainly elderly and low income – approx.12% population
- Build digital literacy
- Recruit a network of volunteer community Digital Champions to support learners
- Bespoke Superfast Business Programme
- Free support for 900 small and medium sized businesses x 12 hours

Our first cabinet



**First Connecting Cheshire Cabinet went live
18th December 2103 in Holmes Chapel**

Where and when?



Phase 1

- 30 telephone exchanges included, of which:
 - 17 exchanges with significant new fibre coverage and 7 with additional coverage
- Ready for service from end March 2014 onwards
- Equates to coverage for over 15,000 premises

Phase 2

- Ready for service from summer 2014 onwards

Phase 3

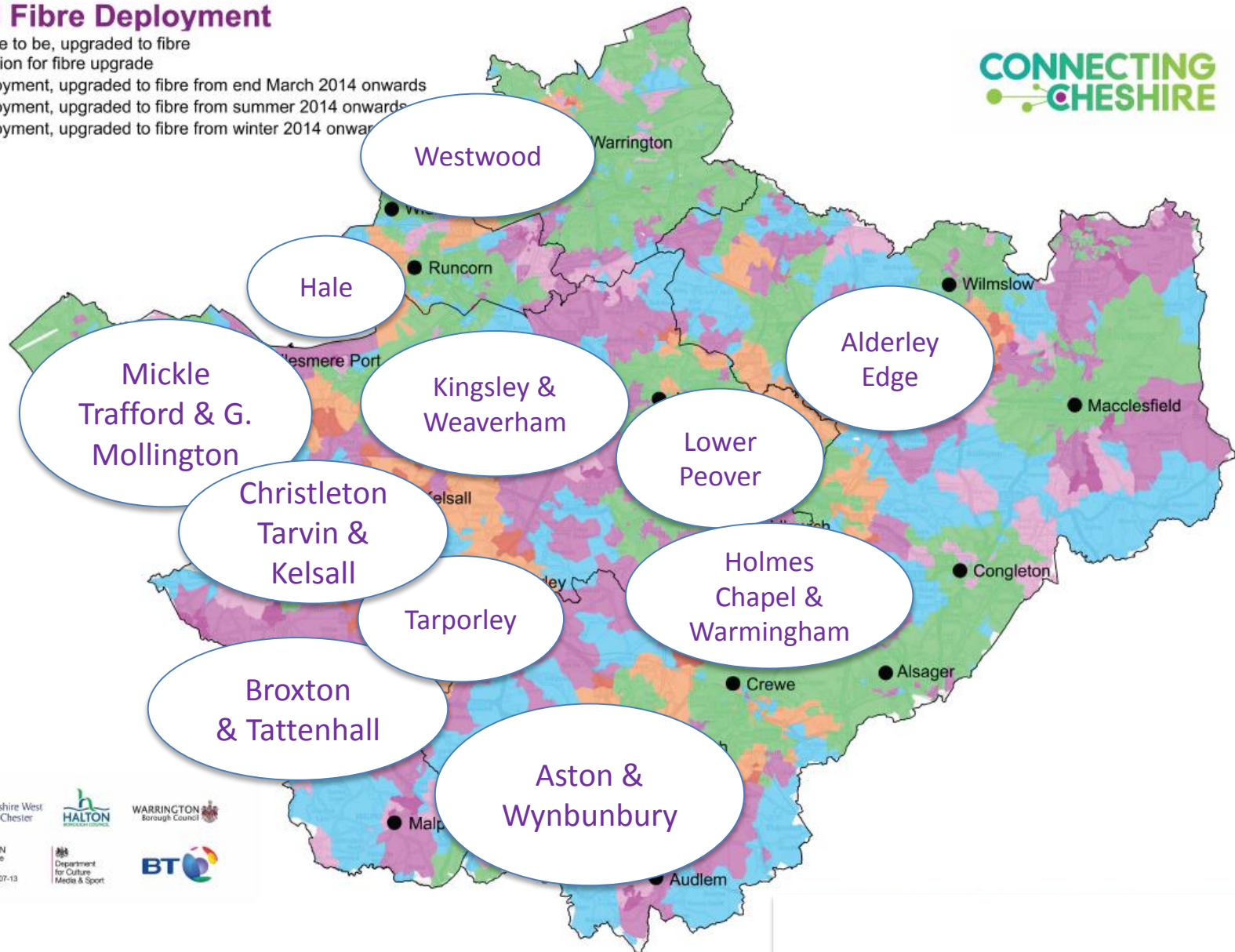
- Ready for service from winter 2014 onwards

3 Phases of Deployment

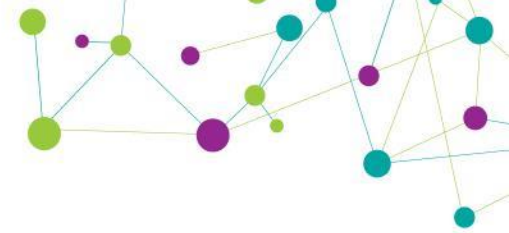


Planned Fibre Deployment

- Already, or due to be, upgraded to fibre
- Under evaluation for fibre upgrade
- Phase 1 deployment, upgraded to fibre from end March 2014 onwards
- Phase 2 deployment, upgraded to fibre from summer 2014 onwards
- Phase 3 deployment, upgraded to fibre from winter 2014 onwards



Summary



- Our deployment is the fastest in the UK
- All our planned fibre deployment is due for completion by spring 2015
- A true partnership of shared values and objectives
- Crucial to manage expectations
- More funding required to reach 100%



A network diagram with several colored circles (green, teal, purple) connected by thin lines. A large green circle in the center contains the text "Keep in Touch Twitter: @SFB_Cheshire".

**Keep in Touch
Twitter:
@SFB_Cheshire**

www.connectingcheshire.org.uk