

positive



NOTTINGHAMSHIRE  
**POLICE**  
Policing for you

Nottinghamshire Healthcare  
NHS Trust



Positive about integrated healthcare

# Section 136 Suite

## Nottinghamshire Healthcare NHS Trust & Nottinghamshire Police

Darren Eaton & Andy Clarke  
Clinical Nurse Lead    Chief Inspector



NOTTINGHAMSHIRE  
**POLICE**  
*Policing for you*

Nottinghamshire Healthcare  
NHS Trust



*Positive about integrated healthcare*

# Section 136 - What is it?

- Mental Health Act (1983)
- Definition –

‘if a constable finds in a place to which public have access a person who appears to be suffering from a mental disorder and to be in immediate need of care or control, the constable may if they think necessary to do so in the interests of that person or for the protection of others, remove that person to a place of safety.’

Service level agreement in relation to  
Nottingham City and Nottinghamshire (2009).



NOTTINGHAMSHIRE  
**POLICE**  
*Policing for you*

Nottinghamshire Healthcare  
NHS Trust



*Positive about integrated healthcare*

# Facts and Figures

- Between 2005 – 2006, 17,400 people were detained under Section 136.
- 11,500 of those were taken to Police Custody  
(Independent Police Complaints Commission – 2008)
- Darzi Report (2007)“high quality care for all”. (NHS Next Stage Review Interim Report: Summary October 2007)
- Recommendations made to have dedicated Places of Safety. (Bradley Report 2009)



NOTTINGHAMSHIRE  
**POLICE**  
*Policing for you*

Nottinghamshire Healthcare  
NHS Trust



*Positive about integrated healthcare*

# Mission statement

“At the Section 136 Suite we aim to ensure a timely and thorough assessment of individuals detained on Section 136, who may be experiencing distressing mental health problems, appear vulnerable and require health and social care assessment by experienced professionals in a safe environment”



NOTTINGHAMSHIRE  
**POLICE**  
*Policing for you*

Nottinghamshire Healthcare



NHS Trust

*Positive about integrated healthcare*

# Millbrook 136 Suite

- History / Development
- Opened – 1<sup>st</sup> December 2008
- Increase in 136 detentions. Why?



NOTTINGHAMSHIRE  
**POLICE**  
*Policing for you*

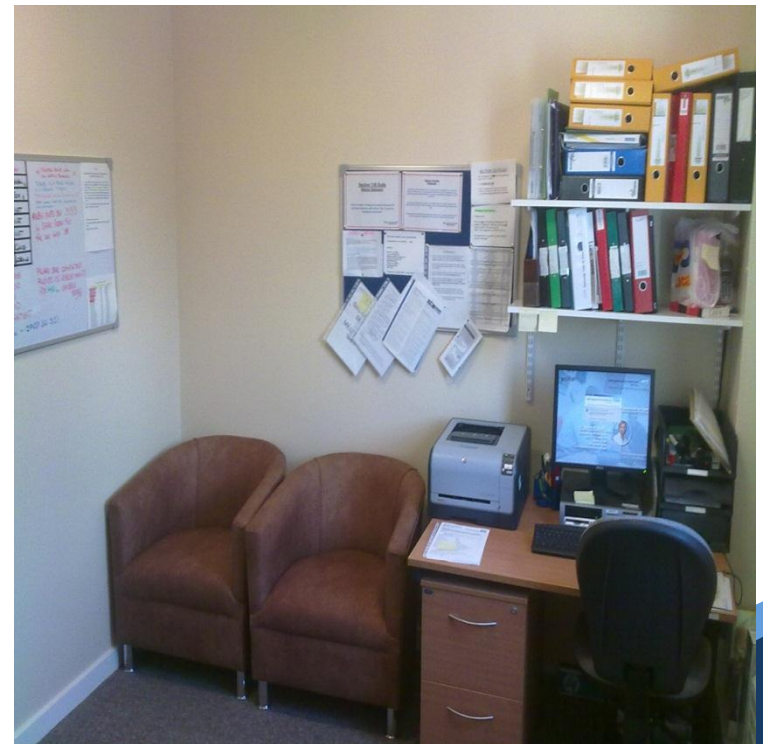
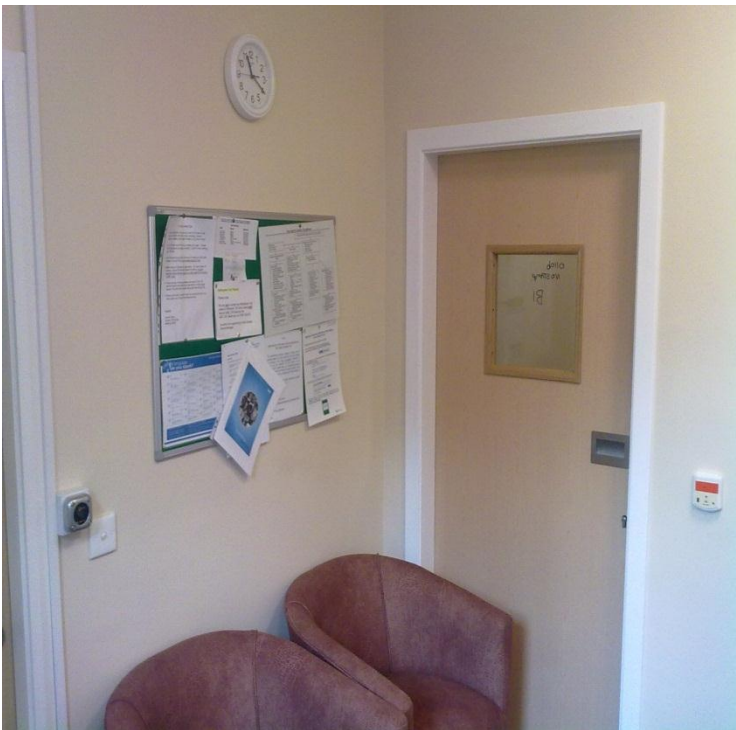
Nottinghamshire Healthcare  
NHS Trust



*Positive about integrated healthcare*

# 136 SUITE ENVIRONMENT

## Mansfield







NOTTINGHAMSHIRE  
**POLICE**  
*Policing for you*

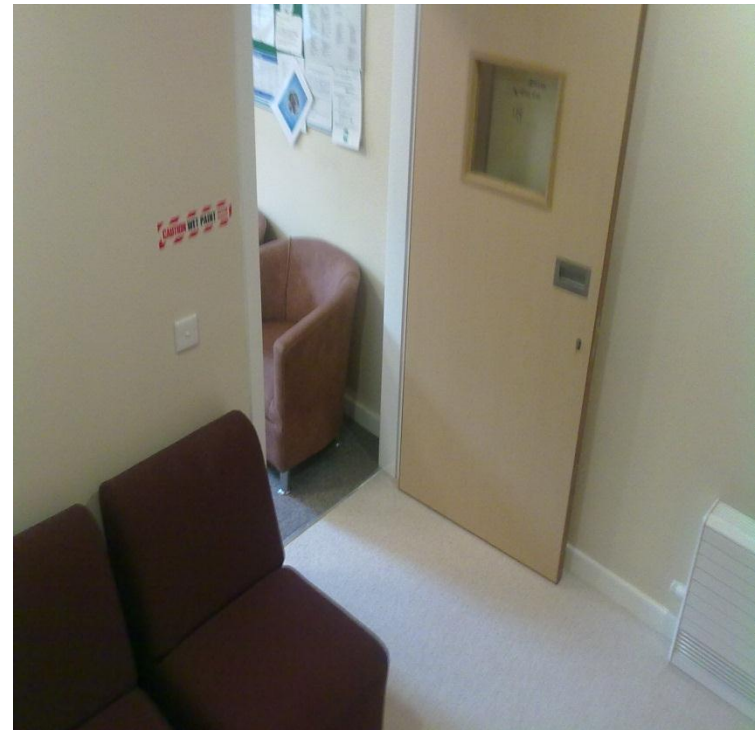
Nottinghamshire Healthcare  
NHS Trust



*Positive about integrated healthcare*

# 136 SUITE ENVIRONMENT

## Mansfield





NOTTINGHAMSHIRE  
**POLICE**  
*Policing for you*

Nottinghamshire Healthcare  
NHS Trust



*Positive about integrated healthcare*

# Obstacles City v County

- City = services covers areas for Gedling, Radcliffe, Nottingham City etc with a population of over 982,300.
- County = services covers Ashfield, Mansfield, Bassetlaw etc with a population of 438,700.
- Funding, commissioning.





NOTTINGHAMSHIRE  
**POLICE**  
*Policing for you*

Nottinghamshire Healthcare

NHS Trust



*Positive about integrated healthcare*

# Facts and Figures

- Opened – 1<sup>st</sup> December 2008
- Average age – 37yrs
- 60% Male, 40% female
- 78% of referrals to Suite known to Mental Health Services



NOTTINGHAMSHIRE  
**POLICE**  
*Policing for you*

Nottinghamshire Healthcare  
NHS Trust



*Positive about integrated healthcare*

# Facts and Figures

- 73% of all 136 assessments discharged
- 60% given follow up
- 40% no follow up required or declined
- Assessing Psychiatrist's write to GP informing them of 136 admission



# Facts and Figures

- 27% of all assessments admitted to Hospital inpatient care.
- 1 in 4 of all 136 assessments requiring Hospital Inpatient care
- 50% Informal
- 50% Detained
  
- **43% of all referrals under influence of Alcohol or illicit substances**



NOTTINGHAMSHIRE  
**POLICE**  
*Policing for you*

Nottinghamshire Healthcare  
NHS Trust



*Positive about integrated healthcare*

# Facts and Figures

- 81% of all referrals assessed.

## Reasons why 19% not assessed in Suite

- Transferred back to Custody
- Unknown – referred but did not attend Suite
- Nottingham City patients transferred back to Nottingham City 136 Suite for assessment
- Transferred to A&E for treatment



NOTTINGHAMSHIRE  
**POLICE**  
*Policing for you*

Nottinghamshire Healthcare  
NHS Trust



*Positive about integrated healthcare*

# Facts and Figures

- Education and training
- Police ring for advice if unsure about a situation, advised on least restrictive option
- Improved working relationship with Police, Social Worker and outside agencies
- Pre-Assessment tool for illicit substances



NOTTINGHAMSHIRE  
**POLICE**  
*Policing for you*

Nottinghamshire Healthcare  
NHS Trust



*Positive about integrated healthcare*

# Moving forward

- Joint working with police officers to ensure that they can be relieved and return to usual duties as quickly as possible.
- Effective communication of presenting issues.
- Sharing of information – Police National Computer (PNC) outcomes
- Respecting each others roles and responsibilities



NOTTINGHAMSHIRE  
**POLICE**  
*Policing for you*

Nottinghamshire Healthcare  
NHS Trust



*Positive about integrated healthcare*

# Moving forward

- Improved working relationships with Police, Social Workers and other outside agencies
- Open, Honest and Accountable.
- “Delivering change through partnership” (Bradley Report. 2009).
- Larger Suite, able to accommodate 2 individuals





NOTTINGHAMSHIRE  
**POLICE**  
*Policing for you*

Nottinghamshire Healthcare



NHS Trust

*Positive about integrated healthcare*





NOTTINGHAMSHIRE  
**POLICE**  
*Policing for you*

Nottinghamshire Healthcare



NHS Trust

*Positive about integrated healthcare*





NOTTINGHAMSHIRE  
**POLICE**  
*Policing for you*

Nottinghamshire Healthcare  
NHS Trust



*Positive about integrated healthcare*

# Contact Details

- Millbrook Unit –136 Jasmine Suite,
- Telephone Number - 0115 956 0836
- Email – [darren.eaton@nottshc.nhs.uk](mailto:darren.eaton@nottshc.nhs.uk)  
[andrew.clarke@nottinghamshire.pnn.police.uk](mailto:andrew.clarke@nottinghamshire.pnn.police.uk)